

WG2



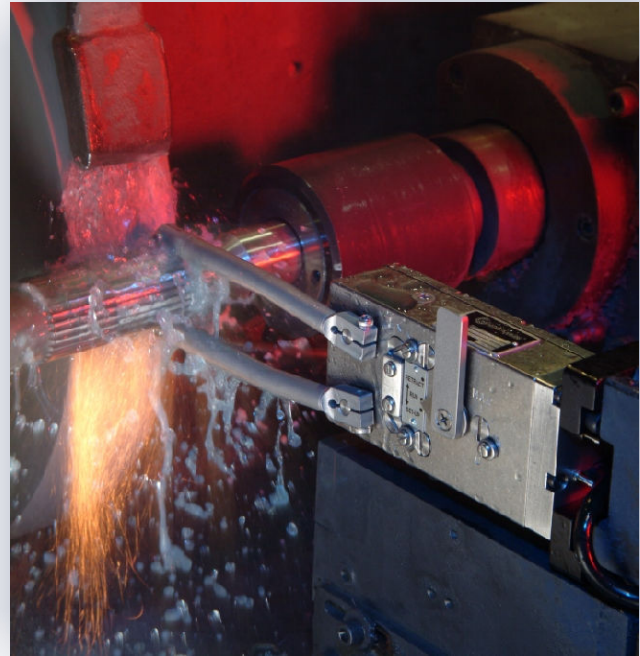
Model WG2 ID/OD Gage

For more than 30 years Control Gaging Inc. has responded to the diverse needs of the machining industry with innovative gaging solutions that have gained us international respect.

As America's leading supplier of in-process gaging systems we do not rest idle on our accomplishments. We continue to develop and patent innovative gaging solutions to improve our customers' process control and out-perform our competitors.

In keeping with our tradition of innovation, Control Gaging is pleased to announce the introduction of the WG2 Gage. The WG2 Gage provides precise measurement under the most demanding conditions. Stainless steel construction and Control Gaging's patented slip-clutch mechanism keeps gage setup time and machine downtime to a minimum.

To setup the WG2, hold the lever in the "setup" position, move the gage fingers into contact with an on-size workpiece and then release the setup lever. In most applications, setup can be accomplished in less than 30 seconds.



- **Quick Setup**
- **Stainless Steel Body**
- **Three Year Warranty**
- **ID/OD Capable**
- **Smooth or Interrupted Surfaces**
- **RoHS Compliant**
- **.0004mm Repeatability @ 5.15 Sigma**
- **Externally Adjustable Contact Force, Overtravel & Retraction, ALL With No Special Tools!**

The rugged design of the WG2 allows Control Gaging to provide the industry's only three year warranty and will allow you to keep your spare part inventory low. The integrated slip clutch protects the gage from damage and allows quick recovery from most gage wrecks.

Part types gaged by the WG2 include: Bearings, Camshafts, Crankshafts, Connecting Rods, Valves, Armatures, Splined Shafts, Impeller Shafts, Bushings, Cylinder Linings, Valve Stems, Drills, Rotors, Reamers, Pistons and many more!

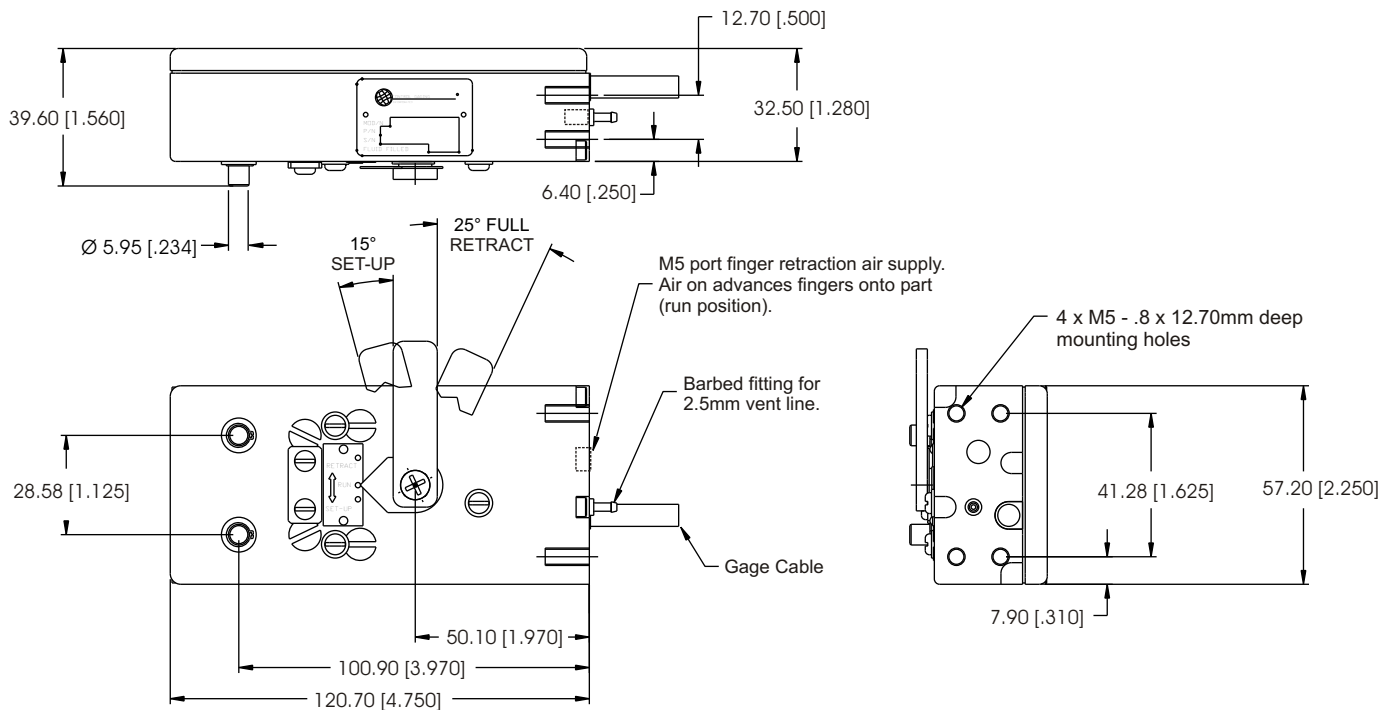
TAKE CONTROL & SAVE MONEY

Control Gaging Incorporated

5200 Venture Dr. Ann Arbor, Michigan 48108
www.controlgaging.com

Phone: +1 734.668.6750 Fax: +1 734.994.1335
Email: sales@controlgaging.com

WG2 Jump-On Gage



Range: OD - 5mm - 165mm (.2" - 6.5")
ID - 12mm - 165mm (.5" - 6.5")

Repeatability: .0004mm (.000016") @ 5.15 sigma

Retraction Amount: 2.5 degrees (5.2mm using 118mm length fingers)

Retraction Mechanism Pressure: 4.1 - 5.5 bar (60 - 80 psi)

Weight: 1.6kg (3.6lbs.)

Sealing: IP67

TAKE CONTROL & SAVE MONEY

Control Gaging Incorporated

5200 Venture Dr. Ann Arbor, Michigan 48108
www.controlgaging.com

Phone: +1 734.668.6750 Fax: +1 734.994.1335
Email: sales@controlgaging.com