

BRINELL SCOPES **HiLIGHT™**

**Casting a New Light
on Accurate Brinell Testing**

Advanced 20x LED Brinell Microscope
Designed for Optimal Illumination
of Brinell Indentations



NEW: Automatic Power Switch Option Saves Batteries Even More.

NEWAGE
Testing Instruments, Inc.

BRINELL SCOPES HiLight™

Casting a New Light on Accurate Brinell Testing

- Built-in LEDs for optimum illumination of test impression and better accuracy.
- One battery lasts up to 200 hours or more.
- Turns on and off with a quick twist of the base OR optionally with a motion sensor/timer for automatic power control.
- No awkward flashlight attachment
- Optional cradle for storing the scope.
- Removable base for small 5/8" footprint.

Model 5620-05: 20x power with a 7 mm long scale and .05 millimeter graduations on the reticle. Overall Size: 2" diameter x 6" high. Footprint 1-1/2" with removable foot, 5/8" without foot.

A New and Innovative Line of LED-Illuminated Brinell Scopes

Newage Testing Instruments has a different approach to Brinell scope construction in its new HiLight Brinell Scope. The HiLight Series uses built-in high-efficiency LEDs (light-emitting diodes) to illuminate Brinell impressions. The LEDs are ideally positioned to provide an even and consistent definition of the Brinell impression's edge.

To illuminate impressions traditional Brinell scopes use a flashlight attachment which shines in through an opening in the side of the scope. The operator often moves the angle of the illumination up and down to "pick" a view of the impression to measure and thereby introduces more variation into the measurement process. The HiLight Brinell Scopes are completely enclosed so no ambient light reaches the test impression - the source of the light is the built-in LEDs. Optimized surface illumination with a sharp 20X magnification helps insure more reliable results whether measuring Brinell impressions or other applications such as total case depth on heat treated samples.

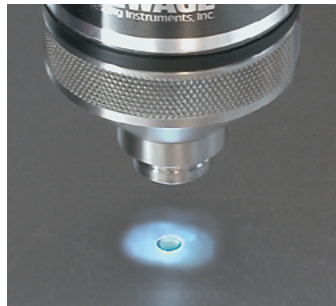
In addition to the illumination advantages by using LEDs, the HiLight scopes have improved durability and greater efficiency for up to 200 hours continuous operation without replacing the battery. The scope can be used with the snap-on base so it stands upright by itself and provides a stable platform for making measurements, or the base can be removed for measurements with a narrow 5/8" footprint.

Part 5621: Scope Cradle with clips, mounting holes

Part 5620-05a: Automatic on-off power control
Call for other components available at time of sale.



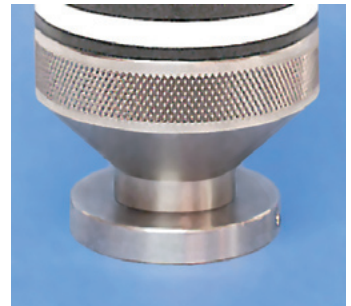
Use the optional cradle, part #5621, to securely clip the scope or the tether for protection and convenience.



The new LED system directs the light at a shallow angle for optimum, consistent illumination of the impression.



The scope turns on and off automatically with the optional motion sensor/timer control, part 5620-05a.



Removable snap-on base can be used for improved stability during testing or removed for use in tight locations.

HiLight® is a registered trademark of Newage Testing Instruments. Copyright 2006 Newage Testing Instruments, Inc. Specifications are subject to change without notice. Printed in USA.

DISTRIBUTED BY:

NEWAGE
Testing Instruments, Inc.